



2021 PRODUCT TRAINING



BY KAS KEL

MASTerview
WINDOWS



**MASTERVIEW
WINDOWS**

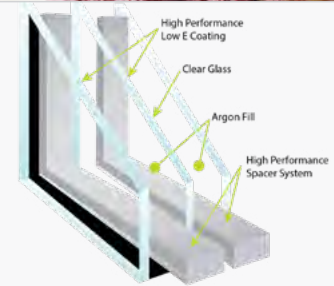
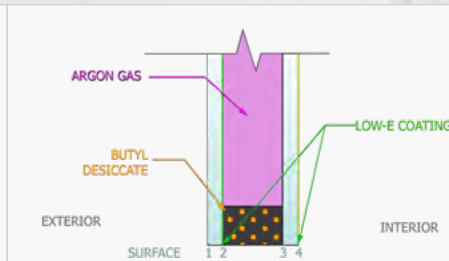
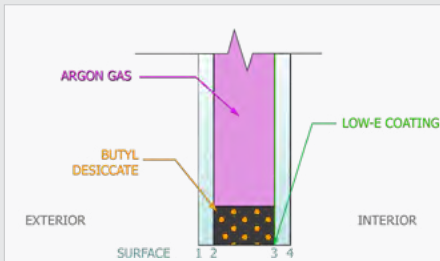
BY KAS KEL

Glazing Options

Not All Glass is Created Equal

Windows in the Northeast can take a beating - Get the Right Glass!!!

Cold and Mixed Climates Like the Northeast Demand Performance from their Windows!



Energy Star III

- Higher level of solar heat control for the Northern Region
- High visible light transmission of 68% for plenty of natural daylighting and visibility into interior spaces
- Lower level of indoor and exterior reflectance
- The Low-e coating on this surface keeps weather OUT of your home. *Frigid winter air and summer heat stay outside where they belong!*

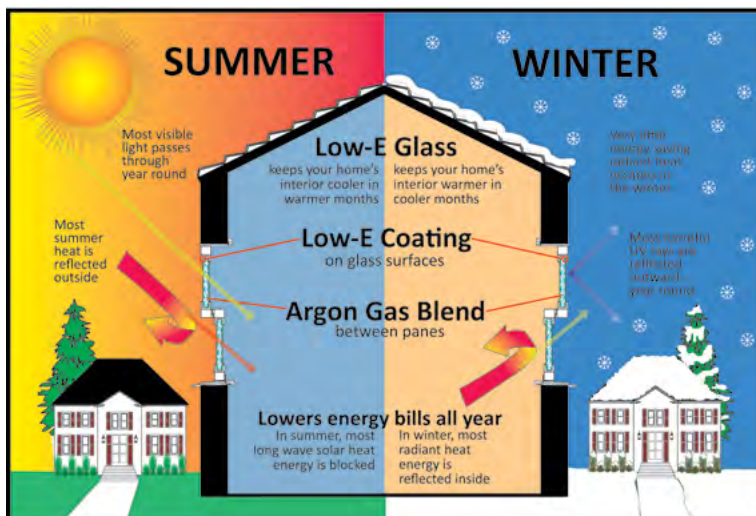
Energy Star U4

- Provides thermal insulation with passive solar gain resulting in year round cost savings
- High-level visible light transmission of 77% (VLT) for plenty of natural daylighting.
- Low-level indoor reflectivity
- Low - e coatings on both glass surfaced keeps weather outside and your controlled environment in!

DOE – R5

- REDUCE THE AVERAGE HEAT LOSS THROUGH WINDOWS BY AS MUCH AS 40 PERCENT!

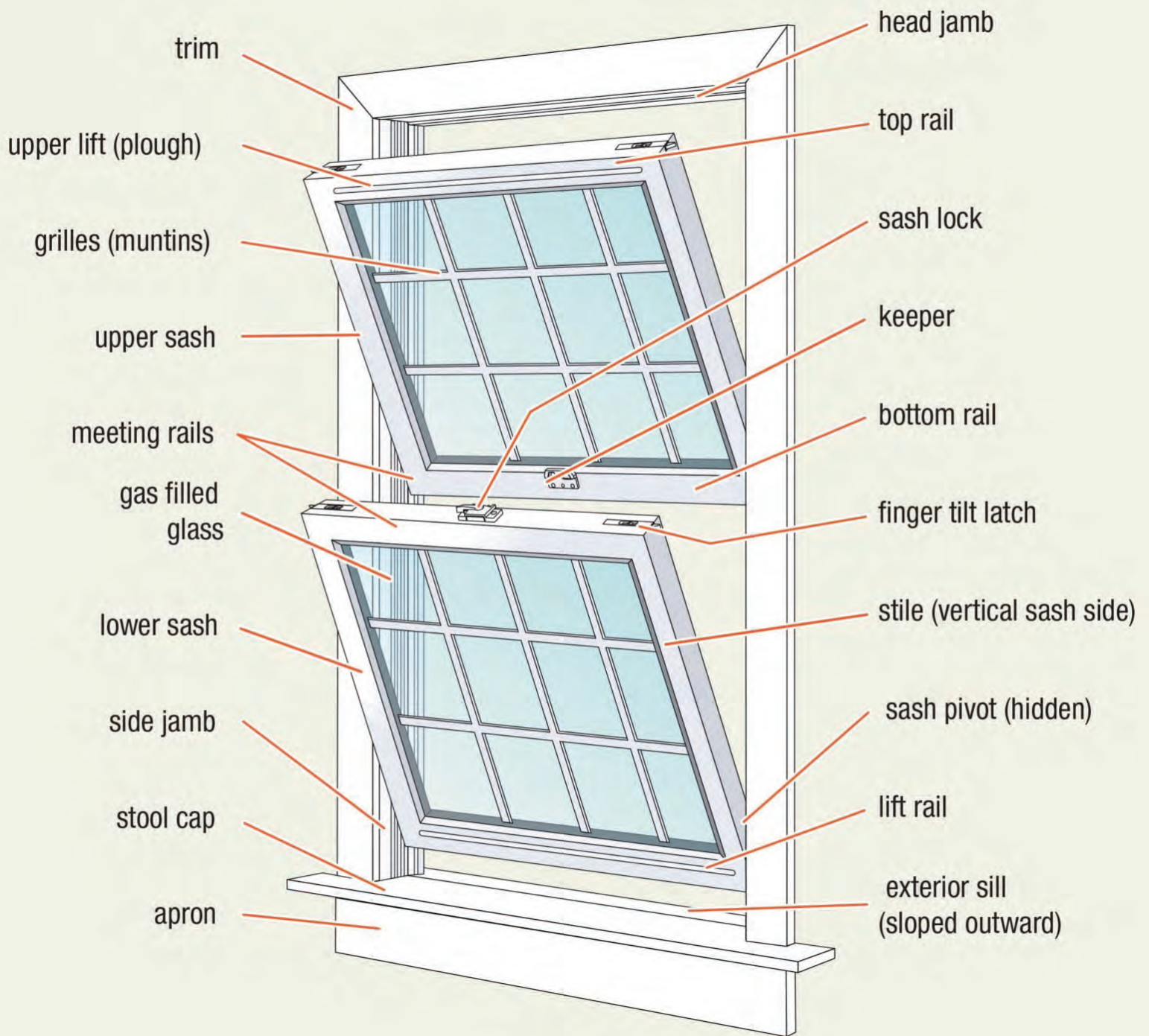
**Based on exterior replacement utilizing 16 windows. Savings are average and may vary according to home type and location.*



CLEAR INSULATED GLASS

2 Pieces of insulated glass with air between them increases your energy efficiency from the standard One solid piece of glass.

Best for garages, sheds and other low cost applications



MASTerview
WINDOWS

BY KAS KEL



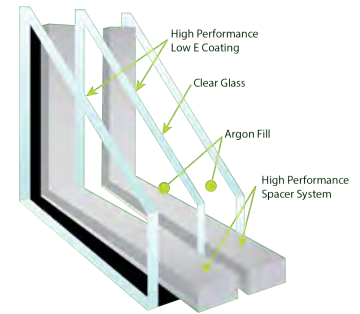
**MASTERVIEW
WINDOWS**

DOE R-5: A Window of the Future

**REDUCE THE AVERAGE HEAT LOSS THROUGH
WINDOWS BY AS MUCH AS 40 PERCENT!**

*The DOE's R-5 Windows Volume Purchase Program is
about more than just saving money*

Cold and mixed climates like the Northeast demand performance from their windows!
R 5 Windows are the top tier of energy efficient windows and are highly insulating!



THE R FACTOR

indicates a windows resistance to Heat Flow
(The higher the number the more effective
the insulating factor).

THE U VALUE

measures the rate of heat transfer (The
lower the U factor, the better a window
insulates.)

The US Department of Energy's Building Technologies
Program (BTP) is coordinating a volume purchase of R5
windows and low-e storm windows, to expand the
market of these high efficiency products.

Price has been the principal barrier to more widespread
market commercialization. The aim of this volume
purchase initiative is to work with industry and potential
buyers to make highly insulated windows more
affordable.

**KASSON AND KELLER, INC IS PROUD
TO BE SELECTED AS A PARTICIPANT
IN THE BTP VPP. WE PROVIDE A
WIDE ARRAY OF PRODUCTS
ACCEPTED UNDER THE DOE – R5
CRITERIA FOR WINDOWS.**

DOE-R5 CERTIFIED WINDOWS

A Superior Window for the Cost

NFRC TESTING CHART DEPARTMENT OF ENERGY R5 PROGRAM TRIPLE GLAZING PACKAGE

Effective Date: March 1, 2010

400/4000 Double Hung

		U-FACTOR	SHGC	VT	CR	DBL LOW EY	GAS
SSB	WITHOUT GRIDS	0.21	0.21	0.39	71	Y	DOUBLE ARGON
SSB	WITH GRIDS	0.21	0.19	0.35	71	Y	DOUBLE ARGON
DSB	WITHOUT GRIDS	0.22	0.21	0.39	69	Y	DOUBLE ARGON
DSB	WITH GRIDS	0.22	0.19	0.34	69	Y	DOUBLE ARGON

700/7000 Casement

		U-FACTOR	SHGC	VT	CR	DBL LOW EY	GAS
SSB	WITHOUT GRIDS	0.20	0.19	0.35	74	Y	DOUBLE ARGON
SSB	WITH GRIDS	0.21	0.18	0.32	74	Y	DOUBLE ARGON
DSB	WITHOUT GRIDS	0.22	0.19	0.35	74	Y	DOUBLE ARGON
DSB	WITH GRIDS	0.22	0.18	0.32	74	Y	DOUBLE ARGON

700/7000 Awning

		U-FACTOR	SHGC	VT	CR	DBL LOW EY	GAS
SSB	WITHOUT GRIDS	0.20	0.19	0.35	75	Y	DOUBLE ARGON
SSB	WITH GRIDS	0.20	0.18	0.32	75	Y	DOUBLE ARGON
DSB	WITHOUT GRIDS	0.21	0.19	0.35	74	Y	DOUBLE ARGON
DSB	WITH GRIDS	0.22	0.18	0.32	74	Y	DOUBLE ARGON

400/4000 Picture Window

		U-FACTOR	SHGC	VT	CR	DBL LOW EY	GAS
SSB	WITHOUT GRIDS	0.19	0.22	0.41	73	Y	DOUBLE ARGON
SSB	WITH GRIDS	0.19	0.20	0.37	73	Y	DOUBLE ARGON
DSB	WITHOUT GRIDS	0.20	0.22	0.41	73	Y	DOUBLE ARGON
DSB	WITH GRIDS	0.21	0.20	0.37	73	Y	DOUBLE ARGON

400/4000 Rolling

		U-FACTOR	SHGC	VT	CR	DBL LOW EY	GAS
SSB	WITHOUT GRIDS	0.21	0.22	0.40	70	Y	DOUBLE ARGON
SSB	WITH GRIDS	0.21	0.19	0.36	70	Y	DOUBLE ARGON
DSB	WITHOUT GRIDS	0.22	0.21	0.40	68	Y	DOUBLE ARGON
DSB	WITH GRIDS	0.21	0.20	0.35	70	Y	DOUBLE ARGON

What's between the Glass Makes all the Difference

MASTerview WINDOWS ARE BUILT WITH ADVANCED TECHNOLOGY DURALITE WARM-EDGE SPACERS



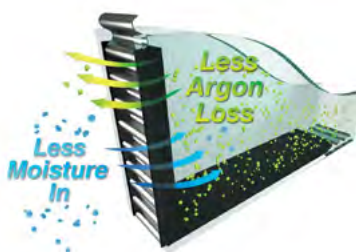
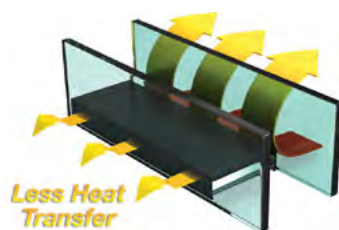
Windows built with Duralite technology reduce heat transfer and help stabilize the temperature of the inner windowpane, maintaining a comfortable inside environment, condensation-free glass, and saving you money on energy costs.



DURALITE® SPACER DESIGN

Duralite is a flexible, warm-edge spacer that lives between the inner and outer window panes. The Duralite technology features a unique no metal composite laminating system that provides superior durability and thermal performance for glass insulation in all weather.

A Masterview vinyl window with Duralite spacers contains an argon gas-filled polycarbonate shim with a virtually impermeable butyl sealant, a three-sided continuous moisture barrier, and a desiccated topcoat. This advanced design eliminates condensation and mold and allows natural light to filter in with UV blocking technology that protects interior finishes and decor.



SUPERIOR THERMAL PERFORMANCE

The thermal performance of a window plays a major role in household energy conservation. A high-performance window system will keep your energy costs low by reducing heat loss in the winter and heat gain in the summer. Duralite combined with Low-E glass and argon produces one of the highest performing, energy-efficient window systems, saving you money on your heating and cooling costs. Duralite is an ENERGY STAR® qualified product.

JUST BECAUSE IT'S VINYL, DOESN'T MEAN IT'S LIKE OUR VINYL WINDOWS

Not ALL Vinyl Windows are Like OUR Vinyl Windows



Advanced Materials Construction

- Made from exclusive advanced formula PVC compounds for superior performance.
- Strong, durable, impact-resistant .
- Resists pollution, acid rain, salt air, heat, humidity, temperature extremes and weathering.
- Smooth durable vinyl wipes clean with a damp cloth.
- Stands up to the worst weather and never needs painting.



Energy Saving Design and Construction

- Profiles are non-conductive, solid vinyl.
- Double glazing for superior insulation, keeps noise outside.
- Eliminates the need for storm windows.
- Unique multi-chamber profile traps dead air for added insulation.
- Vinyl windows provide a true thermal barrier. Far more effective than ordinary windows.



Maintenance-Free

- Durable, heavy-duty balance for fingertip glide.
- Vinyl profiles are self-lubricating: will remain easy to operate year after year.
- No more sanding, painting or puttying-ever!
- Impact-resistant vinyl resists dents and scratches . Finish can't scratch or flake off.



Strength and Durability

- Heavy-duty double-wall frames add to the structural strength of the entire window-nearly double the thickness of some other vinyl windows.
- Interlocking sash rails resist tampering.
- Double-strength insulating glass.
- Ventilation lift lock allows ventilation without inviting intruders.
- Heavy-duty, dual-arm operators and multi-point locking systems on casements, bays and bows.



Vinyl Windows Are Built to Last!

- Rigid profiles with color as part of the vinyl.
- Clean architectural lines for a traditional window look.
- Easy to clean with just a damp cloth or soap and water.
- Timeless, long-lasting beauty from advanced materials.
- Rugged durability ensures long-term performance, lasting value.



Adds Beauty and Value to Your Home

- A home's energy efficiency and ease of maintenance are strong selling points at resale time.
- 68 % of your replacement window investment is recoverable at resale.
- Add your accrued energy savings; vinyl windows can actually yield a gain after about four years ..*

*Based on exterior replacement utilizing 16 windows. Savings are average and may vary according to home type and location.



A Wise Investment-Your Best Value!

- Cleans easily from inside your home.
- Maintenance-free: needs no paint or putty.
- Resists condensation.
- Won't peel, rot or corrode.
- Virtually eliminates air infiltration.

220 Series | Double Hung Window

High thermal efficiency - exceptionally solid design

The standard window with all the superior features.

The 220 new construction series double hung comes standard with features superior over the ordinary new construction window- including thermal performance that will exceed Energy Star, choice of top and bottom sash ventilation , easy clean feature , peace of mind locking system. Fabricated for today's generation.

NFRC THERMAL PERFORMANCE DATA*

Clear-Air-Clear	0	0	0		
Energy Star U4	0.25	0.27	0.48	47	N,NNC
Low E w/ Argon	0.28	0.28	0.51	63	NC
Energy Star III	0.29	0.37	0.51	59	NC
High Perf. Low E	0.32	0.28	0.51	58	

*contact us to see thermal data with grids.

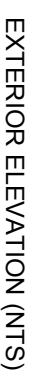
MASTerview NEW CONSTRUCTION WINDOWS WILL OFFER YOU A LIFETIME OF WORRY-FREE OPERATION, BACKED BY ONE OF THE BEST WARRANTIES IN THE INDUSTRY.



Features

	STANDARD	OPTION
MATERIALS	High-grade PVC delivers exceptional strength and thermal performance. White or Beige Interior	✓
	Full Fusion Welded Sash and Frame	✓
	Sloped Sill and Interlock Leg	✓
	3-1/4" Frame Depth	✓
PERF.	DP 40 Rating	✓
	DP 50 Rating	✓
	Full 3" Foam insulating Wrap	✓
GLAZING	Energy Star III (3/4") (recommended)	✓
	Energy Star U-4 (3/4")	✓
	Clear insulated glass (3/4")	✓
	Duralite flexible, warm-edge spacers	✓
	Tints, Heat Reflection and other options available	✓
SCREENS	Extruded aluminum framed fiberglass full screen	✓
	Extruded aluminum framed locking 1/2 Screen	✓
	Full Flex Screens on painted exterior frames	✓
	Aluminum Screening Material	✓
CONSTRUCTION	Composite Reinforced Meeting Rail	✓
	Bottom and Top Sash Tilt in for easy cleaning	✓
	Double weather stripped Meeting Rail	✓
	Nailing fin with J Channel	✓
	Nail Fin Only	✓
	Egress Sizing Available	✓
	Primed Solid Pine Applied Extension Jambos 4-9/16", 6-9/16" and Custom	✓
	Sheet Rock Returns	✓
HARDWARE	All windows over 23 1/2 inches have 2 sash locks for maximum protection	✓
	Produced in white or beige to seamlessly match your window frame	✓
	Night Latches	✓
	WOCD sash limiters	✓
GRILLS	5/8" Contoured Grill Between the Glass	✓
	3/4" Contoured SDL with spacer bar	✓

SERIES 220 DOUBLE HUNG CROSS-SECTION



MASTERYVIEW WINDOWS

ELEVATION VIEW

SHEET:

BLG

DRAWING #
220 Series DH



300 Double Hung

For a clean look and easy installation

Hides the connecting point between the door unit and the wall construction.

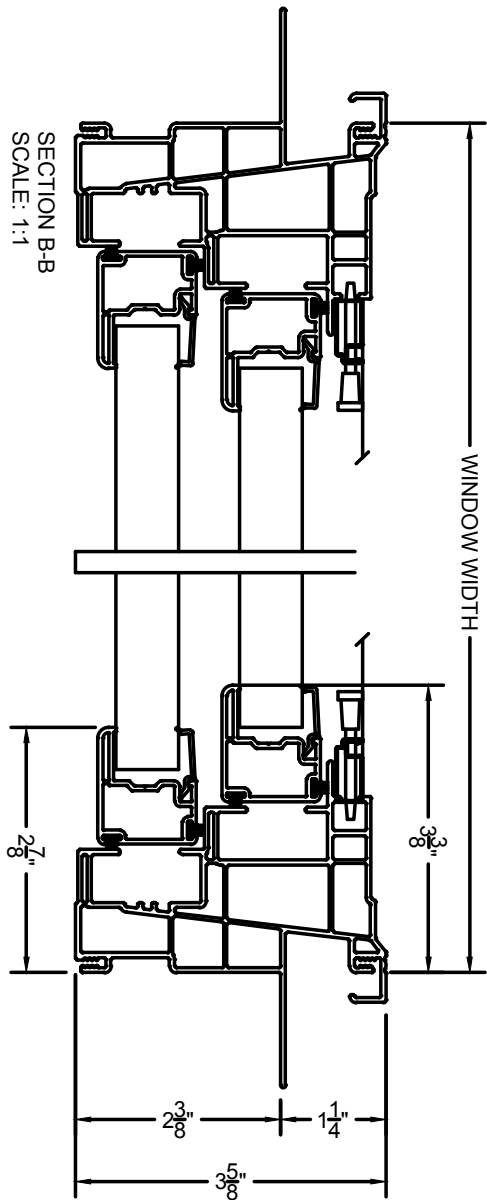
Energy Star U4	0.23	0.27	0.48	51	N,NC
Energy Star III	0.27	0.37	0.52	63	NC
Low E w/ Argon	0.27	0.28	0.52	63	NC
High Perf. Low E	0.31	0.28	0.52	58	
Clear Clear-Air-Clear	0.45	0.62	0.63	46	

*contact us to see thermal data with grids.

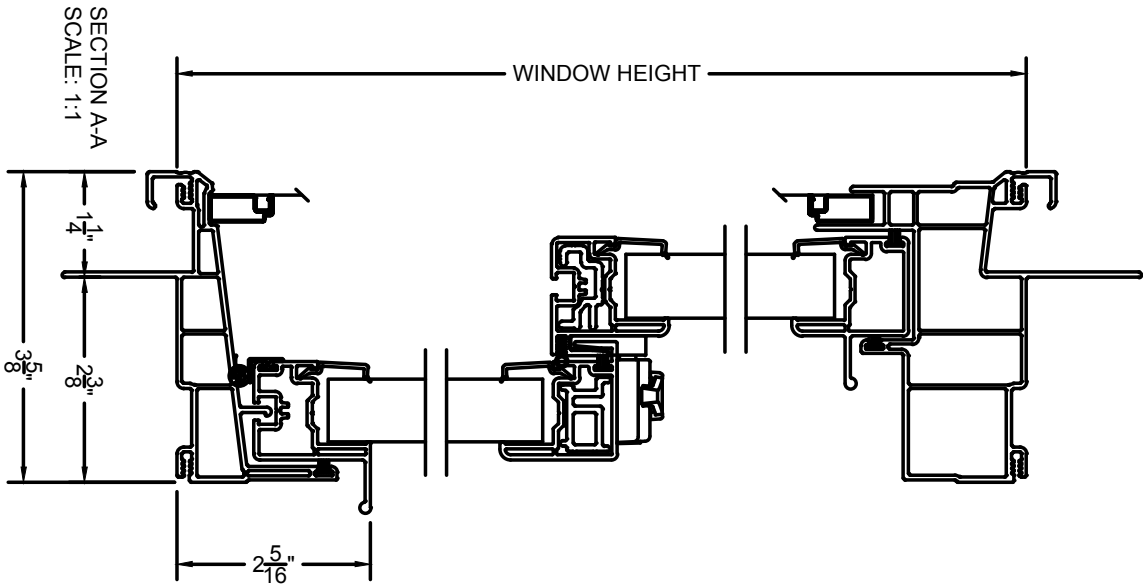
MASTerview NEW CONSTRUCTION WINDOWS OFFER YOU A LIFETIME OF WORRY-FREE OPERATION, BACKED BY ONE OF THE BEST WARRANTIES IN THE INDUSTRY.

		STANDARD	OPTION
MATERIALS	High Grade Advanced Formula PVC	✓	
	Full Fusion Welded Sash and Frame	✓	
	Sloped Sill with Interlocking Leg	✓	
	3-1/4" Frame Depth	✓	
PERFORMANCE	DP 35 Rating	✓	
	DP 50 Rating		✓
	Full 3" Foam insulating Wrap (install required replacements AMA)		✓
GLAZING	Energy Star III	✓	
	Energy Star U-4		✓
	Double Strength Glass		✓
	Tempered Glazing		✓
	Clear insulated glass (3/4")		✓
	Tints, Heat Reflection, Triple Glazing and other options available		✓
SCREENS	Aluminum framed fiberglass 1/2 screen	✓	
	Aluminum Extruded Fiberglass full screen		✓
	Full Flex Screen		✓
	Aluminum Screening Material		✓
CONSTRUCTION	Composite Reinforced Meeting Rail	✓	
	Brickmould Nailfin Casing with J Channel	✓	
	Double weather stripped Meeting Rail	✓	
	J Channel Filler		✓
	Bottom and Top Sash Tilt in for easy cleaning	✓	
	Primed Applied Extension Jambes 4-9/16, 6-9/16 and Custom		✓
	Solid Pine Applied Extension Jambes 4-9/16, 6-9/16 and Custom		✓
GRILLS	3/4" Contoured Grill Between the Glass		✓
	3/4" Contoured SDL with spacer bar		✓

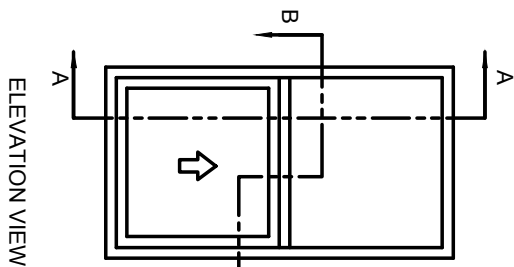
KASSON & KELLER INC.
SERIES 300 DOUBLE HUNG CROSS-SECTION



SECTION B-B
SCALE: 1:1



SECTION A-A
SCALE: 1:1



ELEVATION VIEW

COPYRIGHT 2010
THIS DRAWING AND ITS CONTENTS ARE
THE SOLE PROPERTY OF
KASSON & KELLER, INC.
ANY UNAUTHORIZED USE OR
REPRODUCTION IS STRICTLY PROHIBITED.



MASTERVIEW
WINDOWS

BY KAS KEL

SHEET:
1
OF
1

DRAWN BY:
BLG

DRAWING #
300 SERIES DOUBLE HUNG

700 SERIES | Casement Window

engineered for easy operation and maximum ventilation

Modern utility meets classic design

Our most versatile window combines beauty, a multi-point locking system for added security, and both single and multi-unit combination options for maximum ventilation. Designed for new construction.

GLAZING	U-VALUE	SHGC	VLТ
DOE – R5 – Triple	0.21	0.21	0.21
Energy Star III	0.21	0.21	0.21
Energy Star U-4	0.21	0.21	0.21
Clear	0.21	0.21	0.21

*contact us to see thermal data with grids.

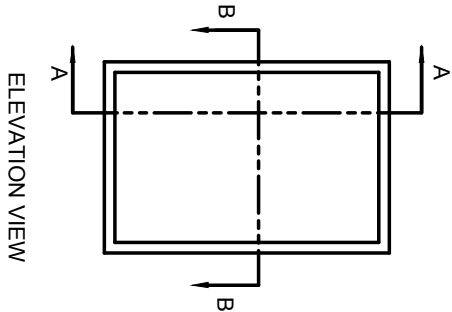
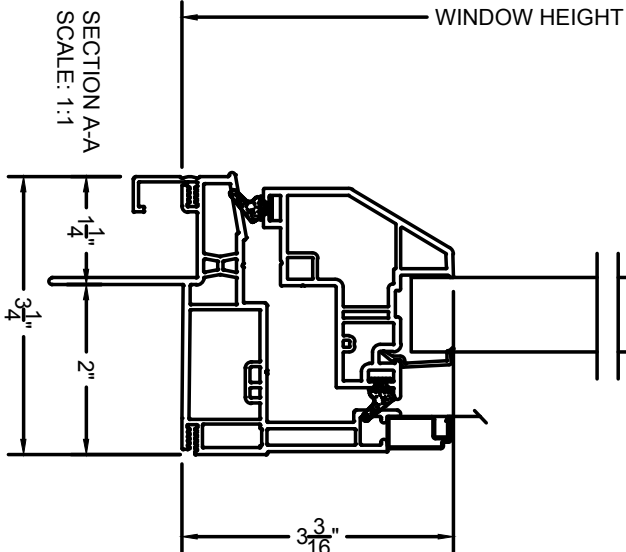
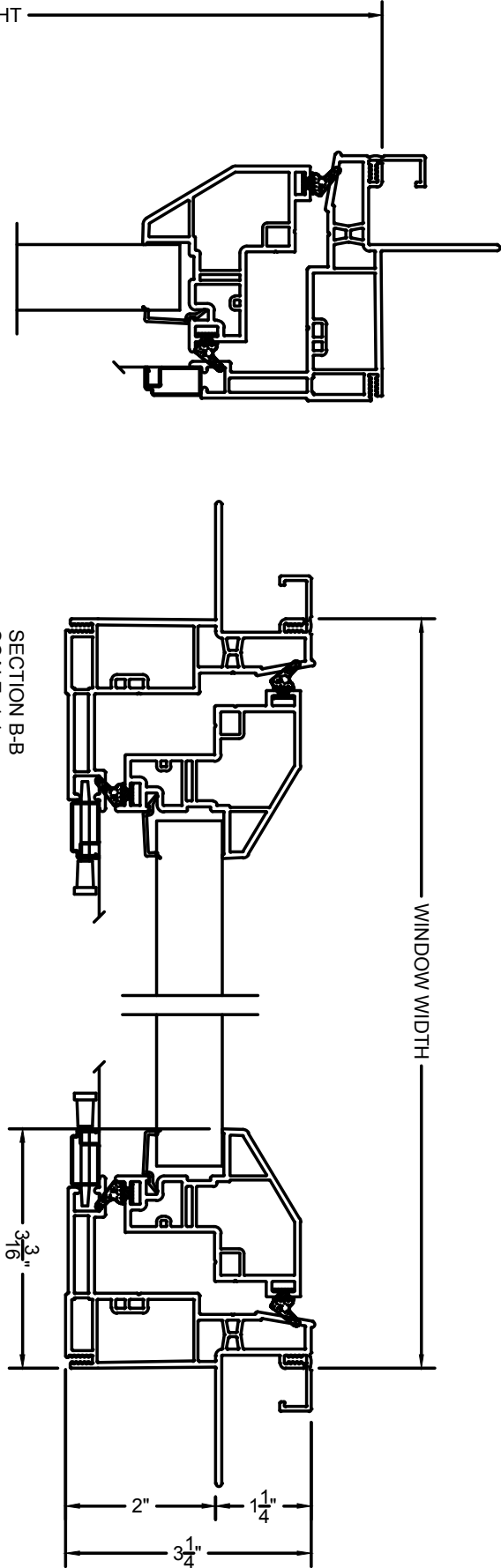
MASTerview NEW CONSTRUCTION WINDOWS WILL OFFER YOU A LIFETIME OF WORRY-FREE OPERATION, BACKED BY ONE OF THE BEST WARRANTIES IN THE INDUSTRY.



Features

		STANDARD	OPTION
MATERIALS	High-grade PVC delivers exceptional strength and thermal performance. White or Beige Interior	✓	
	Fusion Welded Sash and Frame	✓	
	Exterior Beveled Sash	✓	
	Sash Snubbers	✓	
	Double weather stripped Sash	✓	
	Single Lever Multi-Point Locking System	✓	
PERF.	DP 50 Rating	✓	
3/4" GLAZING	Energy Star III (recommended)		✓
	Energy Star U-4		✓
	DOE R5 Triple Glass Package		✓
	Clear insulated glass		✓
	Duralite flexible, warm-edge spacers		
	Tints, Heat Reflection, Impact Resistance, Triple Glazing and other options available		✓
SCREENS	Aluminum Extruded Full View Fiberglass Full Screen	✓	
	Aluminum Screening Material		✓
HARDWARE	Folding Hardware		✓
	Egress Hardware		✓
	Sash Limiter Hardware (for Fall Prevention)		✓
CONSTRUCTION	Nailing fin with J Channel	✓	
	Brickmold J Channel/ or no J Channel		✓
	3" Cambridge Casing		✓
	Primed Applied Solid Pine Extension Jambs 4-9/16, 6-9/16 and Custom		✓
	1/2" and 3/4" Sheetrock Returns		✓
GRILLS	3/4" Contoured Grill Between the Glass		✓
	3/4" Contoured SDL with spacer bar		✓
	2" Contoured SDL with spacer bar for simulated Double Hung look		✓

KASSON & KELLER INC.
SERIES 700 CASEMENT CROSS-SECTION



COPYRIGHT 2011
THIS DRAWING AND ITS CONTENTS ARE
THE SOLE PROPERTY OF
KASSON & KELLER, INC.
ANY UNAUTHORIZED USE OR
REPRODUCTION IS STRICTLY PROHIBITED.



SHEET:
1
OF
1

DRAWN BY:
JPP

DRAWING #
700 SERIES CASEMENT



MASTerview WINDOWS

BAY / BOW

HIGH PERFORMANCE, LOW MAINTENANCE.

A Natural Fit.



The MasterView Bay/Bow series provides high-end elegance in a high-efficiency system. With its heavily insulated seat board and Energy Star Rated glazing option, MasterView Bays and Bows deliver outstanding thermal performance in a particularly vulnerable area of the home.

Standard Features

- All Welded Construction
- 1 1/2" Insulated Seat Board
- Red Oak or Birch Veneer Head and Seat Board
- Screens on Operating Vents
- 4 9/16" or 6 9/16" Jamb Depth
- Hanging Cable System
- Flexible Closure Fin
- Bay Available in DH or Casement Styles

Performance Options

- Energy Star Rated Glazing Packages
- Profile or SDL Grid Package
- Multiple Colors Available
- Custom Jamb Depths

Bay Window



Bow Window





MASTERVIEW WINDOWS

ROLLING / ACCESSORY

HIGH PERFORMANCE, LOW MAINTENANCE.

A Natural Fit.



MasterView Rolling Windows are built on precision-calibrated rollers for long life and smooth fingertip operation. Sash is easily removed for cleaning. Available in the 100, 200, 300 and 400 Series.

MasterView Hopper Windows feature premium construction and a wide range of custom sizes. All sashes tilt in from the bottom.

Standard Features

- Precision Calibrated Rollers
- Interlock at Meeting Rail
- Removable Sash for Easy Cleaning
- Fiberglass Half Screen
- Double Locks Over 28" Height

Performance Options

- Fiberglass Full Screen
- Energy Star Rated Glazing Packages
- Profile Grid Package
- SDL Grid Package
- Multiple Colors Available

Rolling Window



Hopper Window





**MASTerview
WINDOWS**

BY KAS KEL

Specialty Shapes

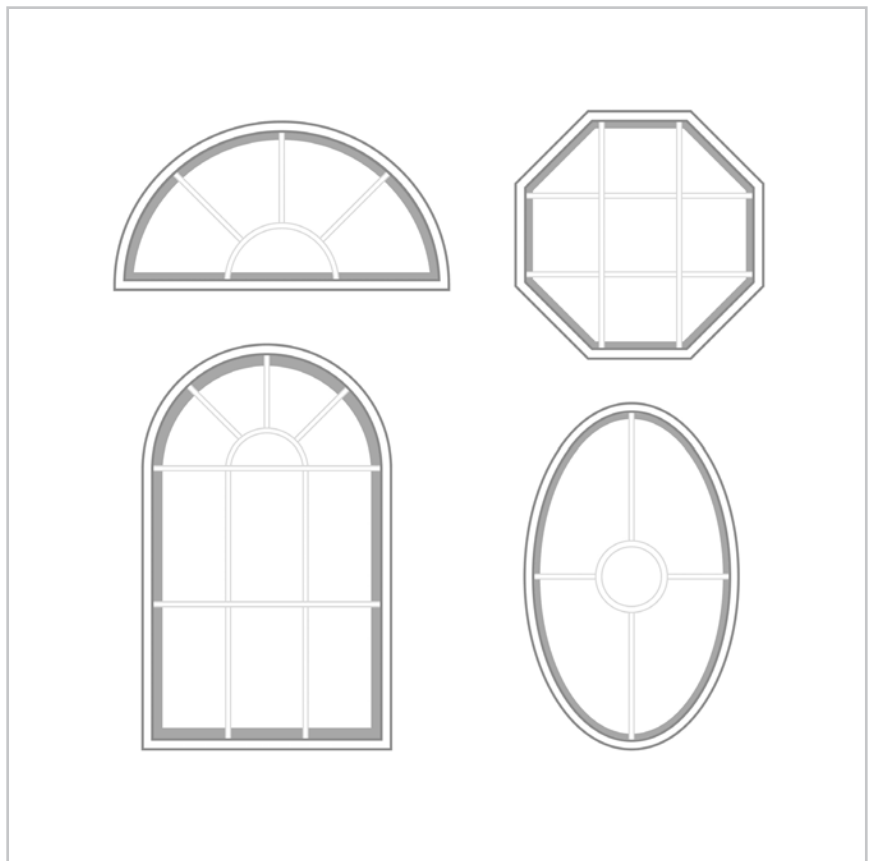
Open a new world of possibilities

Architectural freedom
doesn't mean
sacrificing efficiency

MasterView Specialty Shapes allow for unusual and uniquely shaped windows to function with the same energy efficiency and functional integrity as our other time-tested vinyl windows.

Shape Options

- Gothic/Half-Gothic
- Circle Top
- Eyebrow
- Oval/Half-Oval
- Full Circle
- Ellipse
- Transom
- Quarter Arch
- Operating Octagon
- Custom Shapes





Patio Door Replacement Window

High performance, low maintenance

It's reinforced at key points with heavy-duty aluminum, for maximum rigidity, and with the ST Glazing package meets or exceeds the latest Energy Star guidelines.

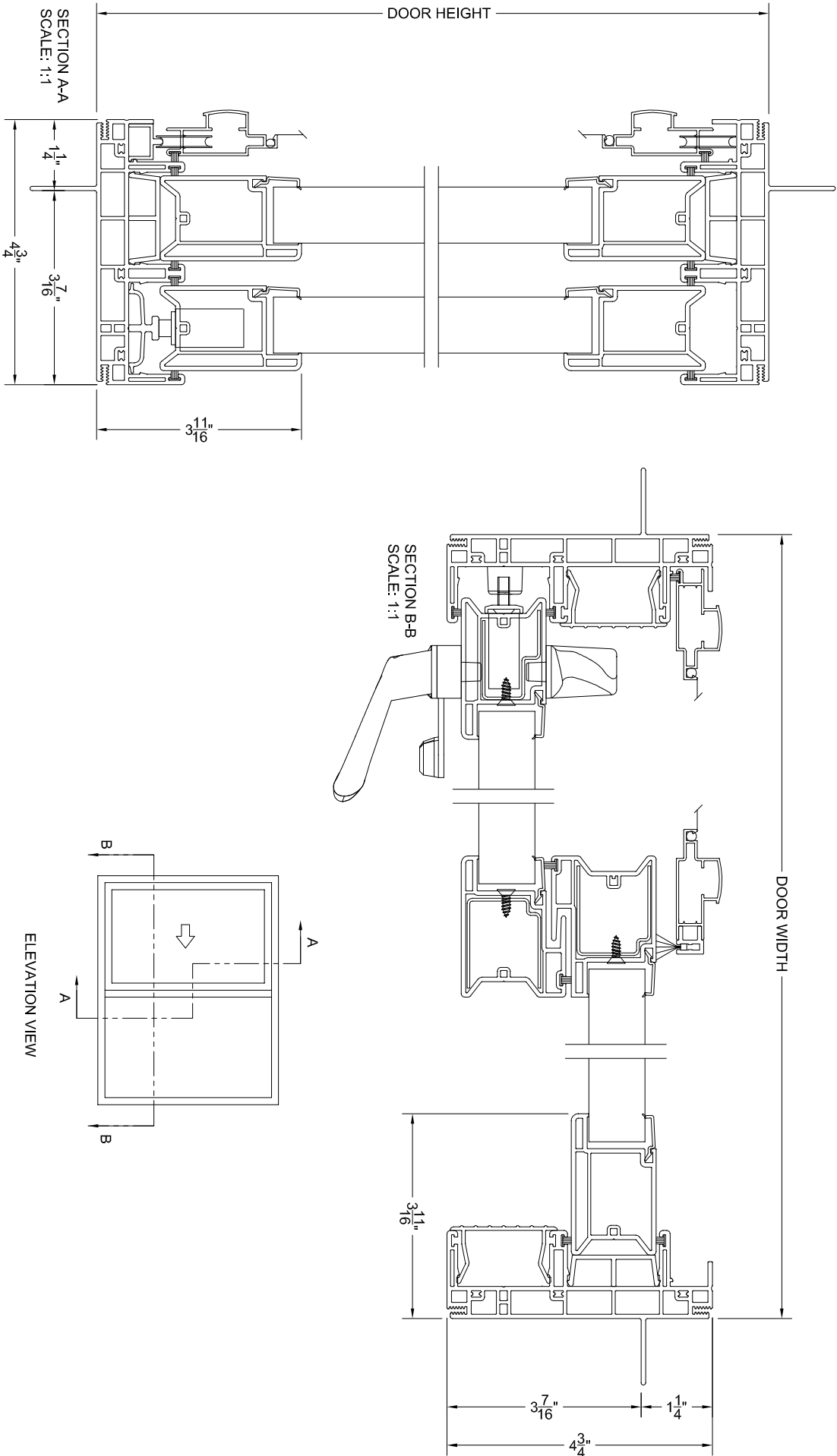
GLAZING	U-VALUE	SHGC	VLT
DOE – R5 – Triple	0	0	0
Low E w/ Argon	0	0	0
High Perf. Low E	0	0	0
Clear	0	0	0

MASTerview NEW CONSTRUCTION WINDOWS WILL OFFER YOU A LIFETIME OF WORRY-FREE OPERATION, BACKED BY ONE OF THE BEST WARRANTIES IN THE INDUSTRY.

Features

	STANDARD	OPTION
MATERIALS	High-grade Advanced Formula PVC	✓
	Sill Design Engineered for Excellent Drainage	✓
	5, 6, 8 Foot 2-Lite Styles	✓
	9, 12 Foot 3-Lite Styles	✓
GLAZING	Low- E with Argon	✓
	Energy Star U-4	✓
	Tints, Heat Reflection and other options available	✓
SCREENS	Aluminum Screen Frame with Fiberglass Mesh Screening	✓
CONSTRUCTION	Integral Nail Fin and Screen Track	✓
	One Rolling and One Stationary Panel	✓
	Interlocking Meeting Rail	✓
	Field Applied Extension Jamb	✓
	White, Beige and Bronze/White Interior Colors	✓
GRILLS	3/4" Contoured Grill Between the Glass	✓
	3/4" Contoured SDL with spacer bar	✓

KASSON & KELLER INC.
SERIES 3200 NEW CONSTRUCTION PATIO DOOR
CROSS-SECTION



COPYRIGHT 2011
THIS DRAWING AND ITS CONTENTS ARE
THE SOLE PROPERTY OF
KASSON & KELLER, INC.
ANY UNAUTHORIZED USE OR
REPRODUCTION IS STRICTLY PROHIBITED.



SHEET:

1
OF
1

DRAWN BY:

JPP

DRAWING #

3200 SERIES PATIO DOOR